



**EMERGENCY  
PHONE NUMBER:  
911**

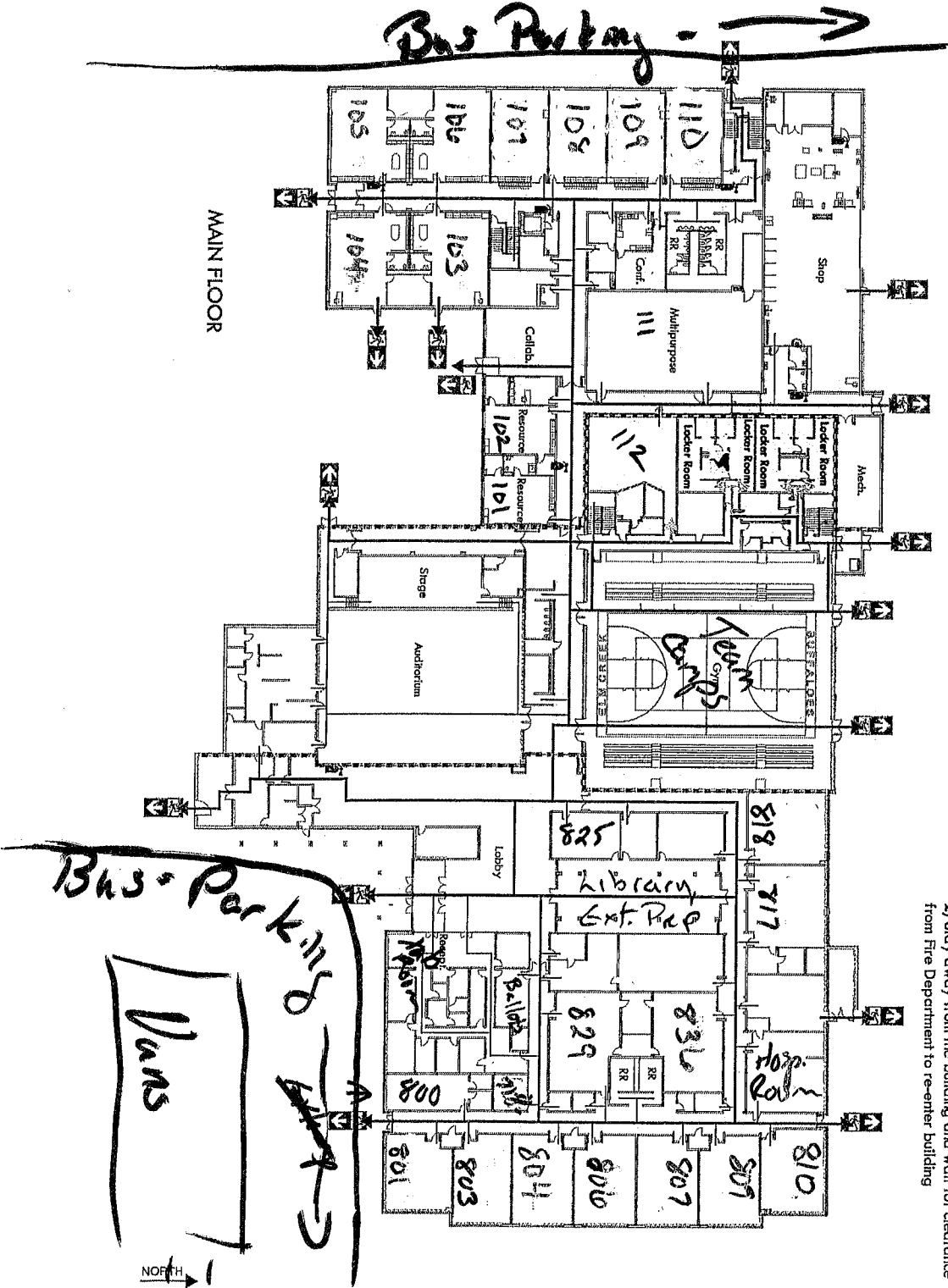
# EMERGENCY EVACUATION AND SHELTER PLAN

**ELM CREEK PUBLIC SCHOOL - OVERALL FLOOR PLAN**  
230 EAST CALKINS AVE  
ELM CREEK, NE 68836

**KEY:**

- STORM SHELTER
- SEVERE WEATHER SHELTER ROUTE
- FIRE EVACUATION ROUTE
- EMERGENCY EXIT
- ENCLOSED FIRE EGRESS EXIT
- FIRE EXTINGUISHER (MULTI-PURPOSE)
- FIRE EXTINGUISHER (DRY CHEM.)
- FIRE EXTINGUISHER (WET CHEM.)
- FIRE ALARM PULL STATION
- FACP (FIRE ALARM CONTROL PANEL)
- FAAP (FIRE ALARM ANNUNCIATOR PANEL)
- FIRE BARRIER
- DEFIBRILLATOR
- MAIN ELECTRICAL SWITCHGEAR
- MAIN GAS SHUT OFF
- GAS SHUT OFF WRENCH
- MAIN WATER SHUT OFF
- KNOX BOX
- PIV (POST INDICATOR VALVE)
- FDC (FIRE DEPARTMENT CONNECTION)

DATE OF ISSUE: 10/09/2023



- SEVERE WEATHER:**  
In the event that a Tornado Warning is issued by the National Weather Service, all staff and students should:
- 1) Move to designated shelter areas immediately
  - 2) Line up against walls and sit on floor
  - 3) Remain in shelter until notified that warning has expired
- FIRE:**  
When fire alarm is sounded, staff and students should:
- 1) Evacuate the building in an orderly fashion by indicated emergency routes to designated assembly areas
  - 2) Stay away from the building and wait for clearance from Fire Department to re-enter building